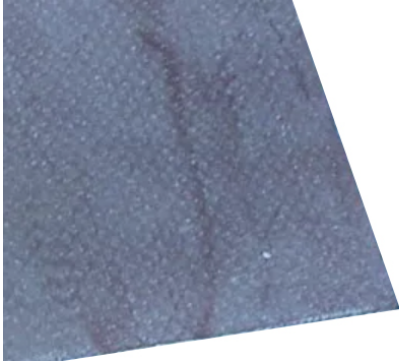




**SPIRALTEC**  
GASKET CO.



## GHT: Graphite Laminate with tanged (perforated) stainless steel insert

GHT is a graphite sheet laminate with reinforcement .004" thick perforated stainless steel type SS316 tang insert, mechanically bond. Made with high purity Flexible Graphite Industrial Grade Foil.

### Main Characteristics and Properties

- Excellent Sealability that meets stringent emission regulations
- High Temperature Resistant
- Chemical Resistant
- Blow-out Resistant
- Non-aging, no creep relaxation
- Meets most industrial fluid sealing service requirements (Recommended for 150 and 300 class service)

Chemical Compositions of Flexible Graphite:

- Carbon: 99% Min.; Ash: 0.8% Max; Leachable Chloride: 30ppm Max
- The product does not contain Lead, Mercury, or any other hazardous materials (content level is undetectable)

Working Temperature Range:

- Oxidizing Environment, such as air: -400° F to 950° F (-240°C to 510°C)
- Mild Oxidizing Environment of most gasket applications: -400° F to 1500° F (-240°C to 850° C)
- Non-oxidizing Environment: Up to 1800° F, the limit of Stainless Steel Insert (Limit of Graphite is 5400° F)

### Product Applications

GHT is an ideal sheet gasket material for most industrial fluid sealing applications. It is resistant to corrosive chemicals, high temperature, and high pressure. Can be used in refineries, chemical and petrochemical plants, paper mills, mines and other industrial fields. GHT gaskets may substitute spiral wound gaskets (Recommended for 150 and 300 class service).

### Product Sizes and Options

Thickness: 1/32", 1/16", 1/8"

Sheet Size: 39.4" x 39.4" (Meter Size), 60" x 60"

Cross-references: Graftech GHE; SGL Polycarbon BTCSS; Garlock 3125TC