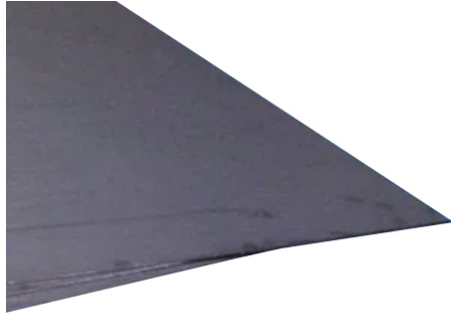




**SPIRALTEC**  
GASKET CO.



## **GHL: Laminated industrial grade flexible graphite sheet no inserts**

Plain graphite Sheet, homogeneous or laminated, without reinforcement insert. Made with high purity Industrial Grade flexible graphite.

### **Main Characteristics and Properties**

Chemical Compositions of Flexible Graphite

Carbon: 99% Min.; Ash: 0.8% Max; Leachable Chloride: 30ppm Max

Typical Physical Properties:

- Compressibility (ASTM F-36) 44%
- Recovery (ASTM F36) 15%
- Creep Relaxation (ASTM F-38) Less than 5%
- Sealability (ASTM F-37) 0.017 fluid ounce/hr (0.5ml/hr)

Working Temperature Range:

- Oxidizing Environment, such as air: -400° F to 950° F (-240° C to 510° C)
- Mild Oxidizing Environment of most gasket applications: -400° F to 1500° F (-240° C to 850° C)
- Non-Oxidizing Environment: -400° F to 5400° F (-240° C to 3000° C)

Thermal Conductivity:

- Parallel to Sheet Surface: 960 BTU-in/ft<sup>2</sup>.h.F (140 W/m.K)
- Through Thickness: 36 BTU.in/ ft<sup>2</sup>.h.F (5W/m.K)
- Coefficient of Friction (Against Steel): 0.018 @ 4 psi (0.03Mpa), 0.157 @ 12 psi (0.08 Mpa)

### **Product Applications**

GHL Plain Graphite Sheet can be used for flange gasket in relatively low pressure sealing condition. Attributing to good thermal conductivity of graphite, GHL is an ideal filler material for metal jacketed gaskets (corrugated metal gaskets, heat exchanger gaskets).

### **Product Sizes and Options**

Standard Thickness: 1/32" (030"), 1/16", 1/8" (Available .005" - 1")  
Sheet Size: 39.4" x 39.4"(Meter Size) and 60" x 60"

Cross-references: GHL Equivalent: Graftech GTB/GHL; Garlock 3123/3125; SGL Polycarbon B